

i8 ^{NEW}

ALL In One , Beyond Your Expectation



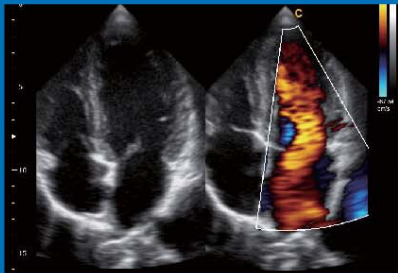
CHISON
Value Beyond Imaging





Chison i8 is a new generation ultrasound system . Integrated with advanced technology, superior image quality and ergonomic design, i8 provides you with comfortable and efficient scanning experience. The shared service configuration allows you to easily select any of many clinical applications including ABD, OB/GYN, Cardiology, Vascular, Small Parts, Breast, and MSK.

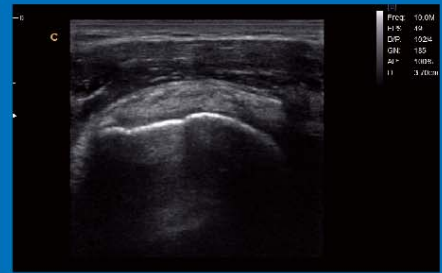
Superior Image Quality



Four Chamber View, B/BC Mode



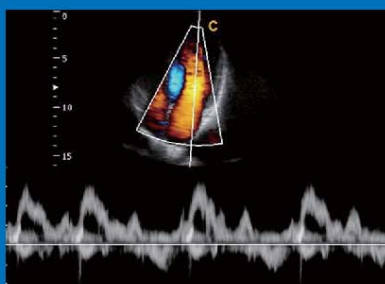
29 Weeks Fetal Face, 4D Mode



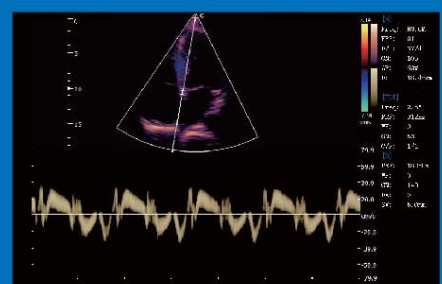
Subscapularis Tendon, B Mode



Fetus, 2B Mode



Four Chambers View, PW Mode



Interventricular Septum, TDI Mode

Features

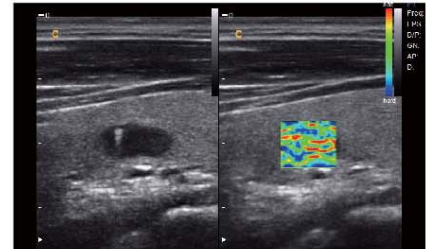
Virtual HD

Virtual HD is a breakthrough in real-time 4D technology. With a moveable virtual light source and the advanced skin rendering techniques, this revolutionary feature dramatically improves the 4D image to allow doctors envision the fetus more vividly than ever. As a result, this cutting-edge innovation will greatly enhance the diagnosis confidence and strengthen the bond between mother and fetus.



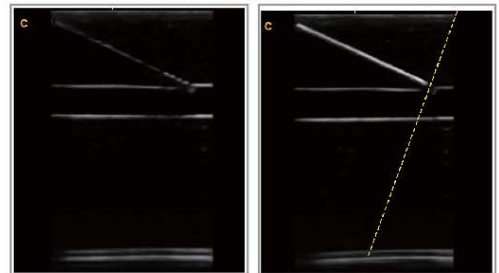
◇ Elastography (option)

Elastography displays tissue stiffness in real time to provide doctors with additional diagnostic information when scanning organs like liver and breast.



◇ Super Needle (option)

With Super Needle, clinicians can see needle inside tissue more clearly during medical procedures. Needle angle up to $\pm 30^\circ$



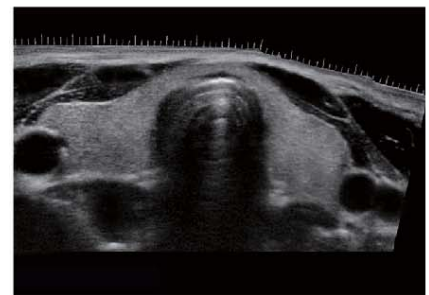
Without Super Needle

With Super Needle

Needle is Better Visualized

◇ Curved Panoramic Imaging (option)

Curved Panoramic Imaging utilizes pattern recognition and image synthesis to generate wide and flexible view to reveal more anatomic information for diagnosis.



◇ Up to 18MHz High Frequency Linear Probe

Our high frequency linear probe provides unparalleled detail resolution and superior contrast resolution with up to 18 MHz imaging frequency.



Configuration

19" High Definition LCD Monitor, 4 probe connectors
Advanced 4D technologies: 4D probe and display package
Advanced Imaging Technologies: THI, SRA, Compounding, i-Image™, Elastography (option), Super Needle (option)
Shared Service : Cardiac, Vascular, ABD, OB/GYN, MSK, Small Parts, Breast, Urology, and Pediatric



Probes



- | | | | | | |
|---------------------------------------|-----------------------------------|--------------------------------------|--------------------------------------|---------------------------------------|---------------------------------------|
| | | | | | |
| 2.5MHz-5.3MHz Convex
D3C60L | 5.0MHz-10.0MHz Linear
D7L40L | 7.0MHz-18.0MHz Linear
D12L40L | 4.0MHz-10.7MHz Linear
D7L60L-60mm | 4.0MHz-10.0MHz Transvaginal
D6C12L | 2.5MHz-4.0MHz Phased array
D3P64L |
| | | | | | |
| 4.0MHz-10.7MHz Transvaginal
D7C10L | 2.5MHz-5.3MHz 4D Volume
V4C40L | 2.5MHz-6.4MHz Micro-Convex
D3C20L | 3.5MHz-8.0MHz Pediatric
D5C20L | 4.0MHz-10.7MHz Pediatric
D6C15L | 4.0MHz-10.0MHz Phased array
D6P64L |

WWW.CHISON.COM



Ei820141015

CHISON MEDICAL IMAGING CO., LTD.

Sales & Service Contact Address:

No. 9 Xin Hui Huan Road, New District, Wuxi, Jiang Su Province, China 214028

TEL: 0086-510-85310593 / 85310937

FAX: 0086-510-85310726

EMAIL: sonotouch@chison.com.cn

