

LOCKING PLATES

KUS-Proximal Lateral Femoral Locking Plates (R/L)



Holes	Length (mm)	Code
4	149	4424004R/L
5	169	4424005R/L
6	189	4424006R/L
8	229	4424008R/L
10	269	4424010R/L
12	309	4424012R/L
14	349	4424014R/L

Proximal Lateral Tibial Locking Plates-IV (R/L)



Holes	Length (mm)	Code
5	129	4700005R/L
7	161	4700007R/L
9	193	4700009R/L
11	225	4700011R/L
13	257	4700013R/L



LOCKING PLATES

T Reconstruction Locking Plates (Lower Limber) (R/L)



Holes	Length (mm)	Code
7	91	4730007R/L
8	107	4730008R/L
9	123	4730009R/L
10	139	4730010R/L

L Reconstruction Locking Plates (Lower Limber) (R/L)



Holes	Length (mm)	Code
7	101	4740007R/L
8	117	4740008R/L
9	133	4740009R/L
10	149	4740010R/L

LOCKING PLATES

Distal Lateral Femoral Locking Plates (R/L)



Holes	Length (mm)	Code
5	166	4411005R/L
7	206	4411007R/L
9	246	4411009R/L
11	285	4411011R/L
13	325	4411013R/L
15	363	4411015R/L

Proximal Humerus Locking Plates-III (R/L)



Holes	Length (mm)	Code
4	103	4230003R/L
5	117	4230005R/L
6	131	4230006R/L
7	145	4230007R/L
8	159	4230008R/L
10	187	4230010R/L
12	215	4230012R/L

LOCKING PLATES

S Clavicle Locking Plates (3.0)(R/L)



Holes	Length (mm)	Code
6	70	4382006R/L
7	82	4382007R/L
8	94	4382008R/L
9	105	4382009R/L
10	116	4382010R/L
12	137	4382012R/L

Clavicle Hook Locking Plates (R/L) (Height: 14 mm)



Holes	Length (mm)	Code
6	57	4390006R/L
7	69	4390007R/L
8	81	4390008R/L
9	93	4390009R/L
10	105	4390010R/L

LOCKING PLATES

Clavicle Hook Locking Plates (R/L) (Height: 17 mm)



Holes	Length (mm)	Code
6	57	4390006R/L
7	69	4390007R/L
8	81	4390008R/L
9	93	4390009R/L
10	105	4390010R/L

Olecranon Hook Reconstruction Locking Plates (R/L)



Holes	Length (mm)	Code
4	87	4310004R/L
5	100	4310005R/L

LOCKING PLATES

Mini-T Reconstruction Locking Plates



Holes	Length (mm)	Code
6	43	4330006
7	54	4330006
8	65	4330006
9	76	4330006

Oblique T Radius Reconstruction Locking Plates (R/L)



Holes	Length (mm)	Code
6	45	4340006R/L
7	56	4340007R/L
8	67	4340008R/L
9	78	4340009R/L

LOCKING PLATES

2.7 Distal Radius Buttress Locking Plates (R/L)



Holes	Length (mm)	Code
4	54	4320004R/L
5	62	4320005R/L
7	78	4320007R/L
9	94	4320009R/L

Distal Radius Joint Locking Plates (R/L)



Holes	Length (mm)	Code
8	43	4360008R/L
10	61	4360010R/L

LOCKING PLATES

Calcaneus Locking Plates-I (R/L)



Holes	Length (mm)	Code
8	49	440008R/L
10	59	4400010R/L

Calcaneus Locking Plates-II (Small) (R/L)



Holes	Length (mm)	Code
8	51	4402008R/L

LOCKING PLATES

Calcaneus Locking Plates-II (Max) (R/L)



Holes	Length (mm)	Code
12	67	4402012R/L

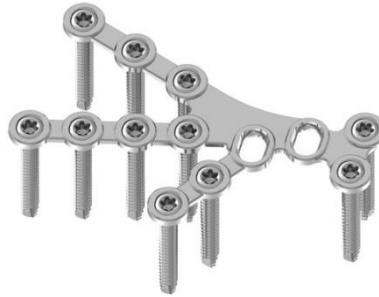
Calcaneus Locking Plates-II (Mid) (R/L)



Holes	Length (mm)	Code
12	67	4402012R/L

LOCKING PLATES

Calcaneus Plates-II (Short) (R/L)



Holes	Length (mm)	Code
11 short	59	3030011R/L
13 short	69	3030013R/L

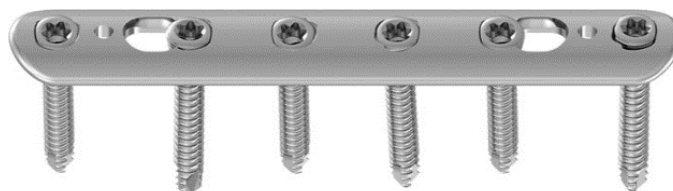
Calcaneus Plates-II (Long) (R/L)



Holes	Length (mm)	Code
13 long	79	3040013R/L
15 long	89	3040015R/L

LOCKING PLATES

One-third Tubular Locking Plates



Holes	Length (mm)	Code
5	64	4100005
6	80	4100006
7	92	4100007
8	104	4100008
10	128	4100009

Ulna Radius Locking Plates



Holes	Length (mm)	Code
5	69	4090005
6	85	4090006
7	97	4090007
8	109	4090008
9	121	4090009
10	133	4090010

LOCKING PLATES

Humerus Compression Locking Plates



Holes	Length (mm)	Code
6	105	4050006
7	119	4050007
8	133	4050008
10	161	4050010
12	189	4050012

Tibial Locking Plates



Holes	Length (mm)	Code
6	127	4071006
7	143	4071007
8	159	4071008
10	191	4071010
12	223	4071012
14	255	4071014
16	287	4071016

LOCKING PLATES

Femur Locking Plates



Holes	Length (mm)	Code
8	195	4083008
10	235	4083010
12	275	4083012
14	315	4083014
16	355	4083016

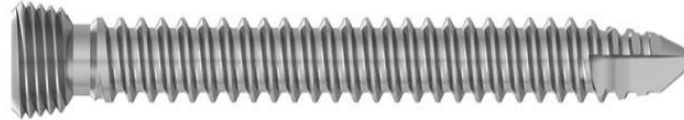
Reconstruction Locking Plates



Holes	Length (mm)	Code
5	63	404005
6	76	404006
7	89	404007
8	102	404008
9	115	404009
10	128	404010
12	154	404012

LOCKING SCREWS

Hexa Locking Screw Ø 2.7



CODE	DESCRIPTION
4822706	2.7*6mm
4822708	2.7*8mm
4822710	2.7*10mm
4822712	2.7*12mm
4822714	2.7*14mm
4822716	2.7*16mm
4822718	2.7*18mm
4822720	2.7*20mm
4822722	2.7*22mm
4822724	2.7*24mm
4822726	2.7*26mm
4822728	2.7*28mm
4822730	2.7*30mm
4822735	2.7*35mm
4822740	2.7*40mm
4822745	2.7*45mm
4822750	2.7*50mm
4822755	2.7*55mm
4822760	2.7*60mm

LOCKING SCREWS

Hexa Locking Screw Ø 3.5



CODE	DESCRIPTION
4833512	3.5*12mm
4833514	3.5*14mm
4833516	3.5*16mm
4833518	3.5*18mm
4833520	3.5*20mm
4833522	3.5*22mm
4833524	3.5*24mm
4833526	3.5*26mm
4833528	3.5*28mm
4833530	3.5*30mm
4833532	3.5*32mm
4833534	3.5*34mm
4833536	3.5*36mm
4833538	3.5*38mm
4833540	3.5*40mm
4833542	3.5*42mm
4833544	3.5*44mm
4833546	3.5*46mm
4833548	3.5*48mm
4833550	3.5*50mm
4833555	3.5*55mm

LOCKING SCREWS

Hexa Locking Screw Ø 5.0



CODE	DESCRIPTION
4845016	5.0*16mm
4845018	5.0*18mm
4845020	5.0*20mm
4845022	5.0*22mm
4845024	5.0*24mm
4845026	5.0*26mm
4845028	5.0*28mm
4845030	5.0*30mm
4845032	5.0*32mm
4845034	5.0*34mm
4845036	5.0*36mm
4845038	5.0*38mm
4845040	5.0*40mm
4845042	5.0*42mm
4845044	5.0*44mm
4845046	5.0*46mm
4845048	5.0*48mm
4845050	5.0*50mm
4845055	5.0*55mm
4845060	5.0*60mm
4845065	5.0*65mm
4845070	5.0*70mm
4845075	5.0*75mm
4845080	5.0*80mm
4845085	5.0*85mm
4845090	5.0*90mm



LOCKING SCREWS

Hexa Hollow Locking Screw



CODE	DESCRIPTION
48765060	6.5*60mm
48765065	6.5*65mm
48765070	6.5*70mm
48765075	6.5*75mm
48765080	6.5*80mm
48765085	6.5*85mm
48765090	6.5*90mm
48765095	6.5*95mm
48765100	6.5*100mm
48765105	6.5*105mm
48765110	6.5*110mm

NON-LOCKING PLATES

S-Clavicular Plates (R/L)



Holes	Length (mm)	Code
6	68	2450006
7	80	2450007R/L
8	92	2450008R/L
9	104	2450009R/L
10	116	2450010R/L
12	140	2450012R/L

Clavicle Hook Plates (R/L) (Height: 14mm)



Holes	Length (mm)	Code
5	78	2510005R/L
6	90	2510006R/L
7	102	2510007R/L
8	114	2510008R/L
9	126	2510009R/L

NON-LOCKING PLATES

Small T Reconstruction Plates



Holes	Length (mm)	Code
6	43	2010006
7	54	2010007
8	65	2010008
9	76	2010009

Oblique T-shaped Radius Reconstruction Plates (R/L)



Holes	Length (mm)	Code
6	45	2020006R/L
7	56	2020007R/L
8	67	2020008R/L
9	78	2020009R/L

NON-LOCKING PLATES

Distal Radius/Fibula Plates



Holes	Length (mm)	Code
3	66	3120003
4	79	3120004
5	92	3120005
6	105	3120006
7	118	3120007
8	131	3120008
9	144	3120009
10	157	3120010

Fibula Reconstruction Plates-II (R/L)



Holes	Length (mm)	Code
3	66	3120003
5	92	3110005R/L
6	105	3110006R/L
7	118	3110007R/L

NON-LOCKING PLATES

Eaglebeak Plates (Reconstruction) (R/L)



Holes	Length (mm)	Code
3	70	2110003R/L
4	83	2110004R/L
5	96	2110005R/L
6	109	2110006R/L
7	122	2110007R/L
8	135	2110008R/L

Proximal Humerus Plates-III (R/L)



Holes	Length (mm)	Code
4	88	2321004R/L
5	100	2321005R/L
6	112	2321006R/L
8	136	2321008R/L
10	160	2321010R/L
12	184	2321012R/L

NON-LOCKING PLATES

Proximal Femoral Condyle Long Plates (R/L)



Holes	Length (mm)	Code
5	140	3560005R/L
6	156	3560006R/L
7	164	3560007R/L
9	188	3560009R/L
11	220	3560011R/L

L Reconstruction Plates (R/L)



Holes	Length (mm)	Code
6	83	3410006R/L
7	99	3410007R/L
8	115	3410008R/L
9	131	3410009R/L
10	147	3410010R/L
11	163	3410011R/L

NON-LOCKING PLATES

T Reconstruction Plates (R/L)



Holes	Length (mm)	Code
6	83	3420006R/L
7	99	3420007R/L
8	115	3420008R/L
9	131	3420009R/L
10	147	3420010R/L
11	163	3420011R/L

130° DHS Compression Hip Plates (Non-Locking)



Holes	Length (mm)	Code
4	97	3611004
5	116	3611005
6	135	3611006
7	154	3611007
8	173	3611008
10	211	3611010

NON-LOCKING PLATES

Restricted Compression Plates (Upper Limb)



Holes	Length (mm)	Code
4	52	1110004
5	64	1110005
6	76	1110006
7	88	1110007
8	100	1110008
9	112	1110009
10	124	1110010
12	136	1110012

Restricted Compression Plates (Tibia)



Holes	Length (mm)	Code
6	112	1120006
7	128	1120007
8	144	1120008
9	160	1120009
10	176	1120010
12	208	1120012

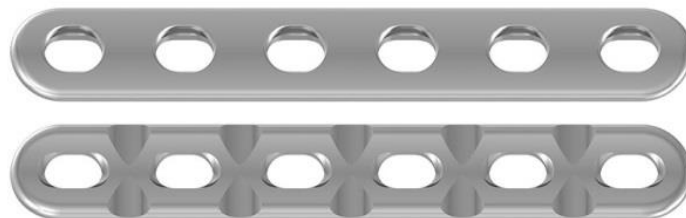
NON-LOCKING PLATES

Restricted Compression Plates (Femur Curve)



Holes	Length (mm)	Code
8	158	1131008
9	176	1131009
10	194	1131010
12	230	1131012
14	266	1131014
16	302	1131016

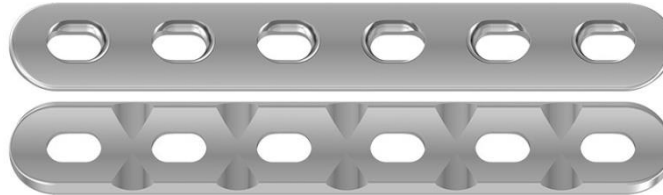
LC-DCP Ulna Radius Plates



Holes	Length (mm)	Code
4	48	1220004
5	60	1220005
6	72	1220006
7	84	1220007
8	96	1220008
9	108	1220009
10	120	1220010

NON-LOCKING PLATES

LC-DCP Humerus Plates



Holes	Length (mm)	Code
5	84	1230005
6	100	1230006
7	116	1230007
8	132	1230008
9	148	1230009
10	164	1230010

One-third Tubular Plates



Holes	Length (mm)	Code
5	60	1410005
6	72	1410006
7	84	1410007
8	96	1410008
9	108	1410009
10	120	1410010

NON-LOCKING PLATES

Reconstruction Plates



Holes	Length (mm)	Code
5	60	1310005
6	72	1310006
7	84	1310007
8	96	1310008
9	108	1310009
10	120	1310010
12	144	1310012

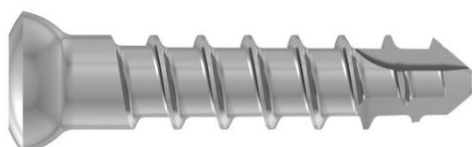
NON-LOCKING SCREWS

Lag Screws



CODE	DESCRIPTION
S36312065	Lag Screw (12*65mm)
S36312070	Lag Screw (12*70mm)
S36312075	Lag Screw (12*75mm)
S36312080	Lag Screw (12*80mm)
S36312085	Lag Screw (12*85mm)
S36312090	Lag Screw (12*90mm)
S36312095	Lag Screw (12*95mm)

Cross Bone Screw



CODE	DESCRIPTION
5022106	2.0*6mm
5022108	2.0*8mm
5022110	2.0*10mm
5022112	2.0*12mm
5022114	2.0*14mm
5022116	2.0*16mm
5022118	2.0*18mm
5022120	2.0*20mm

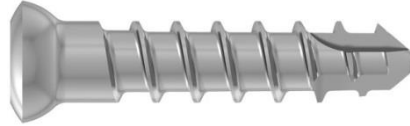


★ PT. ENDO INDONESIA ★

STAINLESS STEEL TRAUMA IMPLANTS

NON-LOCKING SCREWS

Triangle Bone Screw



CODE	DESCRIPTION
5412006	2.0*6mm
5412008	2.0*8mm
5412010	2.0*10mm
5412012	2.0*12mm
5412014	2.0*14mm
5412016	2.0*16mm
5412018	2.0*18mm
5412020	2.0*20mm
5412022	2.0*22mm

Hexa Bone Screw (Ø 2.5 dan Ø 2.7)



CODE	DESCRIPTION	CODE	DESCRIPTION
5412506	2.5*6mm	5412706	2.7*6mm
5412508	2.5*8mm	5412708	2.7*8mm
5412510	2.5*10mm	5412710	2.7*10mm
5412512	2.5*12mm	5412712	2.7*12mm
5412514	2.5*14mm	5412714	2.7*14mm
5412516	2.5*16mm	5412716	2.7*16mm
5412518	2.5*18mm	5412718	2.7*18mm
5412520	2.5*20mm	5412720	2.7*20mm
5412522	2.5*22mm	5412722	2.7*22mm
		5412724	2.7*24mm
		5412726	2.7*26mm
		5412728	2.7*28mm
		5412730	2.7*30mm

NON-LOCKING SCREWS

Hexa Bone Screw (HA Fully Threaded) (HA3.5 & 4.5 Fully Threaded)



CODE	DESCRIPTION	CODE	DESCRIPTION
5413512	HA3.5*12mm	5434520	HA4.5*20mm
5413514	HA3.5*14mm	5434522	HA4.5*22mm
5413516	HA3.5*16mm	5434524	HA4.5*24mm
5413518	HA3.5*18mm	5434526	HA4.5*26mm
5413520	HA3.5*20mm	5434528	HA4.5*28mm
5413522	HA3.5*22mm	5434530	HA4.5*30mm
5413524	HA3.5*24mm	5434532	HA4.5*32mm
5413526	HA3.5*26mm	5434534	HA4.5*34mm
5413528	HA3.5*28mm	5434536	HA4.5*36mm
5413530	HA3.5*30mm	5434538	HA4.5*38mm
5413532	HA3.5*32mm	5434540	HA4.5*40mm
5413534	HA3.5*34mm	5434542	HA4.5*42mm
5413536	HA3.5*36mm	5434544	HA4.5*44mm
5413538	HA3.5*38mm	5434546	HA4.5*46mm
5413540	HA3.5*40mm	5434548	HA4.5*48mm
5413542	HA3.5*42mm	5434550	HA4.5*50mm
5413544	HA3.5*44mm	5434555	HA4.5*55mm
5413546	HA3.5*46mm	5434560	HA4.5*60mm
5413548	HA3.5*48mm		
5413550	HA3.5*50mm		

NON-LOCKING SCREWS

Hexa Bone Screw (HB Fully Threaded) (HB4.0 & 6.5 Fully Threaded)



CODE	DESCRIPTION	CODE	DESCRIPTION
5454012	HB4.0*12mm	5496530	HB6.5*30mm
5454014	HB4.0*14mm	5496535	HB6.5*35mm
5454016	HB4.0*16mm	5496540	HB6.5*40mm
5454018	HB4.0*18mm	5496545	HB6.5*45mm
5454020	HB4.0*20mm	5496550	HB6.5*50mm
5454022	HB4.0*22mm	5496555	HB6.5*55mm
5454024	HB4.0*24mm	5496560	HB6.5*60mm
5454026	HB4.0*26mm	5496565	HB6.5*65mm
5454028	HB4.0*28mm	5496570	HB6.5*70mm
5454030	HB4.0*30mm	5496575	HB6.5*75mm
5454032	HB4.0*32mm	5496580	HB6.5*80mm
5454034	HB4.0*34mm	5496585	HB6.5*85mm
5454036	HB4.0*36mm	5496590	HB6.5*90mm
5454038	HB4.0*38mm		
5454040	HB4.0*40mm		
5454042	HB4.0*42mm		
5454044	HB4.0*44mm		
5454046	HB4.0*46mm		
5454048	HB4.0*48mm		

NON-LOCKING SCREWS

Hexa Bone Screw (HB 6.5 Half Threaded)



CODE	DESCRIPTION
5486550	HB6.5*50mm
5486555	HB6.5*55mm
5486560	HB6.5*60mm
5486565	HB6.5*65mm
5486570	HB6.5*70mm
5486575	HB6.5*75mm
5486580	HB6.5*80mm
5486585	HB6.5*85mm
5486590	HB6.5*90mm
5486595	HB6.5*95mm