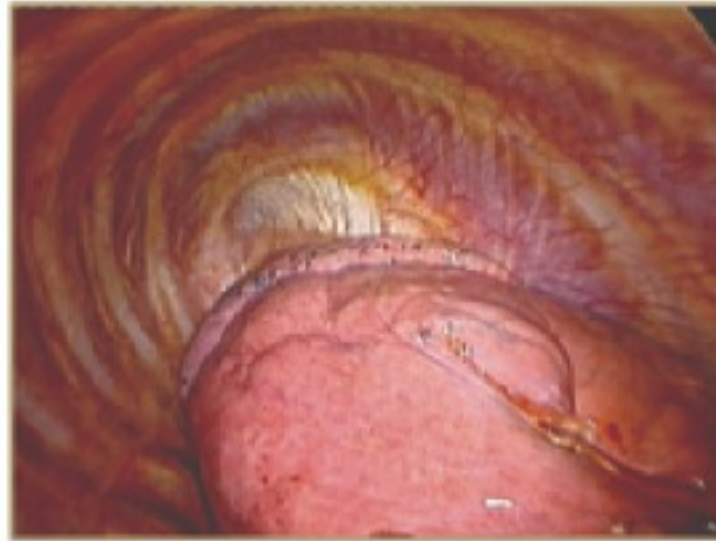
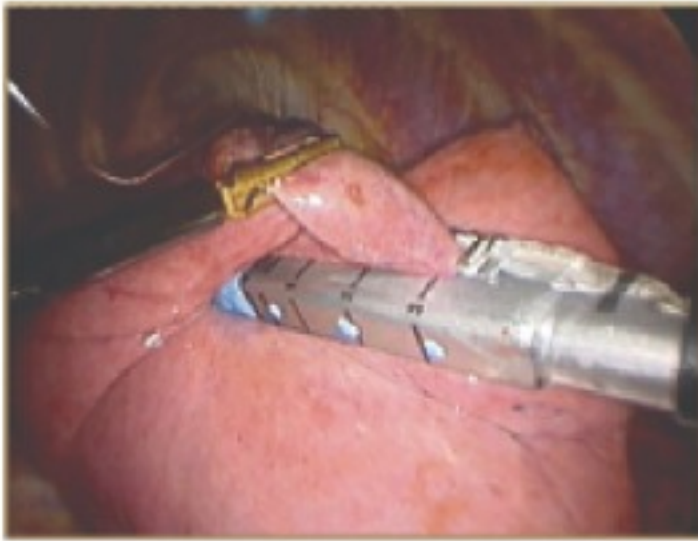


# ENDO EC-1

## Portable Endoscopy Camera System



### Product Parameter

- Camera : 1/3" CCD waterproof camera
- Scanning standard : DVI output 600 lines
- Output : Video
- Light source : LED lamp
- Light source color temperature : 6000K
- Storage : SD card dynamic / static storage
- Display screen : 15" TFT color screen



### Easy and Practical Operation

- Simple panel adjustment can get a nice image effects
- White balance support manual or automatic adjustment

### Applies to All Clinical Departments

- General Surgery
  - Gynecology
  - ENT
  - Gastroenterology
  - Respiratory Medicine
  - Urology
  - Orthopedics
  - Thoracic Surgery
- All departments using the endoscope



PT. ENDO INDONESIA

Jl. Raya Menganti No. 14, Wiyung - Surabaya 60223



Tel : +62-31-7673636

Fax : +62-31-7673737

Toll Free : 0800-177-ENDO (3636)

Email : [info@endo.id](mailto:info@endo.id)

URL : <https://endo.id>