

LIGHTENING THE PATH TO DETAIL

SV-M2K30, Full High Definition Video Endoscopy System

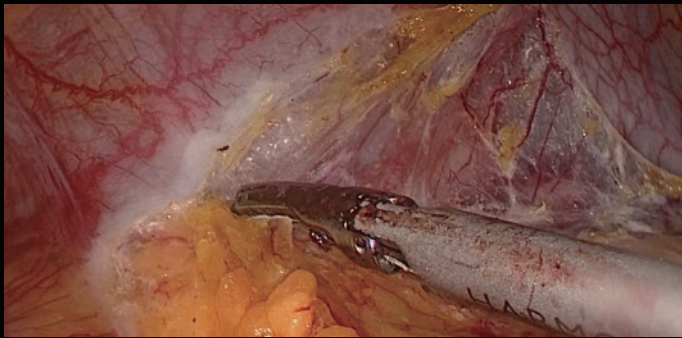


SonoScape Medical Corp.
2F, 12th Building, Shenzhen Software Park Phase II, Keji Middle
2nd Road, Shenzhen, China
Tel: +86-755-26722890 Fax: +86-755-26722850
Email: market@sonoscape.net www.sonoscape.com



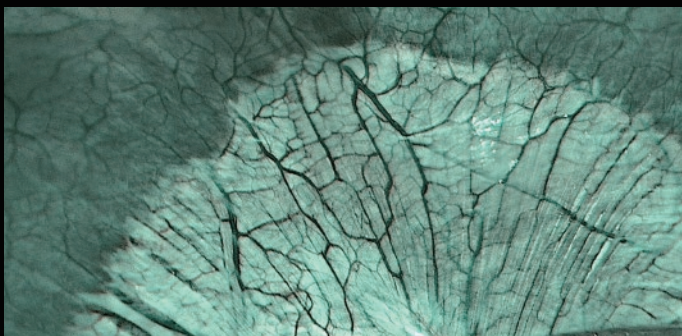
The visual field you can truly trust

Equipped with a 3-CMOS image sensor, SonoScape's 2K system outputs 1920×1080p and 60FPS Full High Definition (FHD) digital signal. The image's color, edge and structure are optimized, the noise minimized. It provides an outstanding and stable visual field down to details, creating an excellent visualizing experience for the surgeons with true-to-color images, enabling easier and finer operations.



The imaging technology you can rely on

SonoScape's 2K system comes with VIST/SFI¹ technology, a multi-mode chromoendoscopy that combines optical and digital image processing. VIST/SFI enhances the details of the mucosa and the blood vessels. With this added information, VIST/SFI may help surgeons in lesion detection and *in vivo* diagnosis.



The configuration and versatility you demand

Functional and ergonomic, the FHD camera head is designed to offer a brilliant user's experience.

- Versatile 16-32 mm multi-focal lens allows up to 2× optical zoom, satisfying various visual field requirements in different medical specialties.
- The 4 customizable, one-key-access remote buttons facilitate parameters-tuning in the middle of a procedure.
- The international standard C-mount guarantees better compatibility with other brands and models of endoscopes.

Image Processor SV-M2K30

Resolution	Full HD 1920×1080p@60fps
Storage	USB, snap to export
Video output signal	DVI*2, HD-SDI*2, Y/C*1, CVBS*1
Digital zooming	2.0 times, 3-step setting
White balance	Auto and memory
Image enhancement	Edge enhancement
IRIS	Auto/Peak/Average

Light Source SL-ED10

Lamp	2-LED
Brightness	Level 1-19
Light modes	WL/SFI/VIST
Standby mode	Low illumination
Lamp life	≥10,000 hours, with indicator
Mechanical features	Low heat, low noise

¹Versatile Intelligent Staining Technology/Spectral Focused Imaging