

Product catalog 2015

Anterior Cruciate Ligament reconstruction

LIGAFIX® interference screws

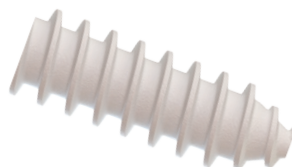
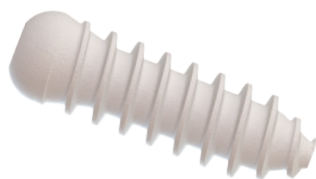
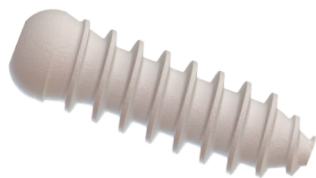
LIGAFIX® are bioabsorbable interference screws designed for tibial and femoral fixation in ligament reconstructions. Made of Duosorb® material (β -TCP & PDLLA), LIGAFIX® implants are osteoconductive and prevent inflammatory reactions¹⁸: LIGAFIX® 30 (30% β -TCP) is preferred for Bone-Tendon-Bone grafts while LIGAFIX® 60 (unique 60% β -TCP) is optimized for hamstring grafts. LIGAFIX® screws are available in various diameters, lengths, composition and design, providing you with the right implant for your surgical technique. ^{6, 12}

LIGAFIX® 30

The diameter of the tunnel drilling has to be adapted to the screw's diameter and to the technique:

BTB: \varnothing of the screw inferior of 1 mm to \varnothing of the drill.

Hamstrings: \varnothing of the screw equal to \varnothing of the drill.



LIGAFIX® 60

Only for hamstring grafts.

The diameter of the screw has to be at the minimum equal to the drill's diameter.

Round head LIGAFIX 30

- \varnothing 7 mm, L 20 mm - COM3007020
- \varnothing 7 mm, L 25 mm - COM3007025
- \varnothing 7 mm, L 30 mm - COM3007030
- \varnothing 8 mm, L 20 mm - COM3008020
- \varnothing 8 mm, L 25 mm - COM3008025
- \varnothing 8 mm, L 30 mm - COM3008030
- \varnothing 8 mm, L 35 mm - COM3008035
- \varnothing 9 mm, L 20 mm - COM3009020
- \varnothing 9 mm, L 25 mm - COM3009025
- \varnothing 9 mm, L 30 mm - COM3009030
- \varnothing 9 mm, L 35 mm - COM3009035
- \varnothing 10 mm, L 25 mm - COM3010R25
- \varnothing 10 mm, L 30 mm - COM3010R30
- \varnothing 10 mm, L 33 mm - COM3010R33
- \varnothing 10 mm, L 35 mm - COM3010R35

Flat head LIGAFIX 30 (only for tibia)

- \varnothing 10 mm, L 30 mm - COM3010030
- \varnothing 10 mm, L 35 mm - COM3010035
- \varnothing 11 mm, L 30 mm - COM3011030
- \varnothing 11 mm, L 35 mm - COM3011035

Round head LIGAFIX 60

- \varnothing 7 mm, L 20 mm - COM6007020
- \varnothing 7 mm, L 25 mm - COM6007025
- \varnothing 7 mm, L 30 mm - COM6007030
- \varnothing 8 mm, L 20 mm - COM6008020
- \varnothing 8 mm, L 25 mm - COM6008025
- \varnothing 8 mm, L 30 mm - COM6008030
- \varnothing 8 mm, L 35 mm - COM6008035
- \varnothing 9 mm, L 20 mm - COM6009020
- \varnothing 9 mm, L 25 mm - COM6009025
- \varnothing 9 mm, L 30 mm - COM6009030
- \varnothing 9 mm, L 35 mm - COM6009035
- \varnothing 10 mm, L 25 mm - COM6010R25
- \varnothing 10 mm, L 30 mm - COM6010R30
- \varnothing 10 mm, L 33 mm - COM6010R33
- \varnothing 10 mm, L 35 mm - COM6010R35

Flat head LIGAFIX 60 (only for tibia)

- \varnothing 10 mm, L 30 mm - COM6010030
- \varnothing 10 mm, L 35 mm - COM6010035
- \varnothing 11 mm, L 30 mm - COM6011030
- \varnothing 11 mm, L 35 mm - COM6011035

LIGAFIX® instruments



Guide pin introducer for guide pin \varnothing 0.9 mm

LIG9000092

Rigid guide pin L 400 mm:

- \varnothing 0.9 mm for \varnothing 7, 8 mm screwdriver (x 2) - LIG9109400
- \varnothing 1.4 mm for \varnothing 9, 10, 11 mm screwdriver (x 2) - LIG9114400

Tap screwdriver:

- White for \varnothing 7 mm screws - LIG9000169
- Black for \varnothing 8, 9, 10, 11 mm screws - LIG9000093

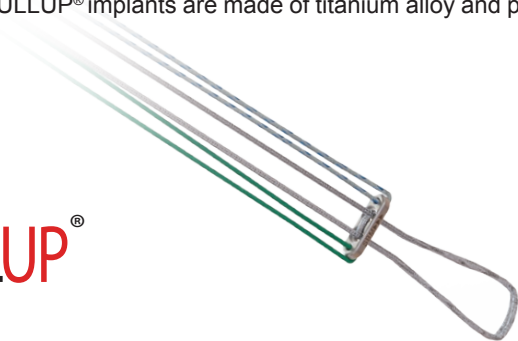
Screwdriver:

- Green for \varnothing 7, 8 mm screws - LIG9008046
- Blue for \varnothing 9, 10, 11 mm screws - LIG9009017

PULLUP® adjustable juxtacortical fixation system

The PULLUP® system provides simplicity and reproducibility in ACL reconstruction procedures thanks to its unique adjustable size during surgery and to an instrumentation compatible with single semitendinosus tendon harvest as well as classic soft tissue transplants. PULLUP® implants are made of titanium alloy and premounted sutures, available in two designs depending on the tunnel diameter.

PULLUP®



Pullup system:

PULLUP for \varnothing 4.5 mm cortical tunnel - PULLU01201
PULLUP XL for \varnothing 5 to 10 mm cortical tunnel - PULXL01202

PULLUP® instruments

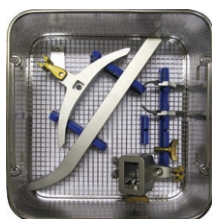
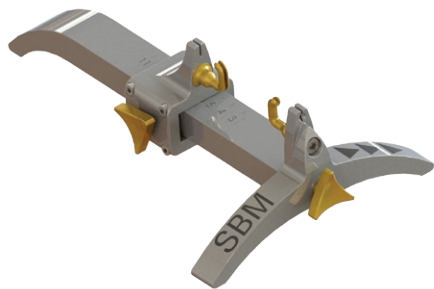


\varnothing 4.5 mm cannulated drill bit
PULL000255

Cutting pliers
PULL000219

GraftTech® preparation station

The GraftTech® preparation station enables to facilitate soft tissue graft preparation, particularly for PULLUP® constructs. It is composed of a regular base and optional add-ons depending of the type of graft to be prepared.



GraftTech® preparation station base instrumentation set
(including stainless steel basket and lid)
PULLTAB000

Options for GraftTech® preparation station

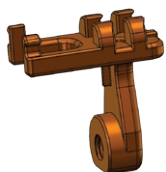
Bulldog pliers FB421R

Mounting key - hex size 4 mm CLE9006004

Hook for GraftTech® holder PULL00E217
Hook for GraftTech® slider PULL00F217

Bracket for GraftTech® holder PULL00G217
Bracket for GraftTech® slider PULL00H217

GraftTech®



TRANSLIG® bioabsorbable cross pin for femoral fixation

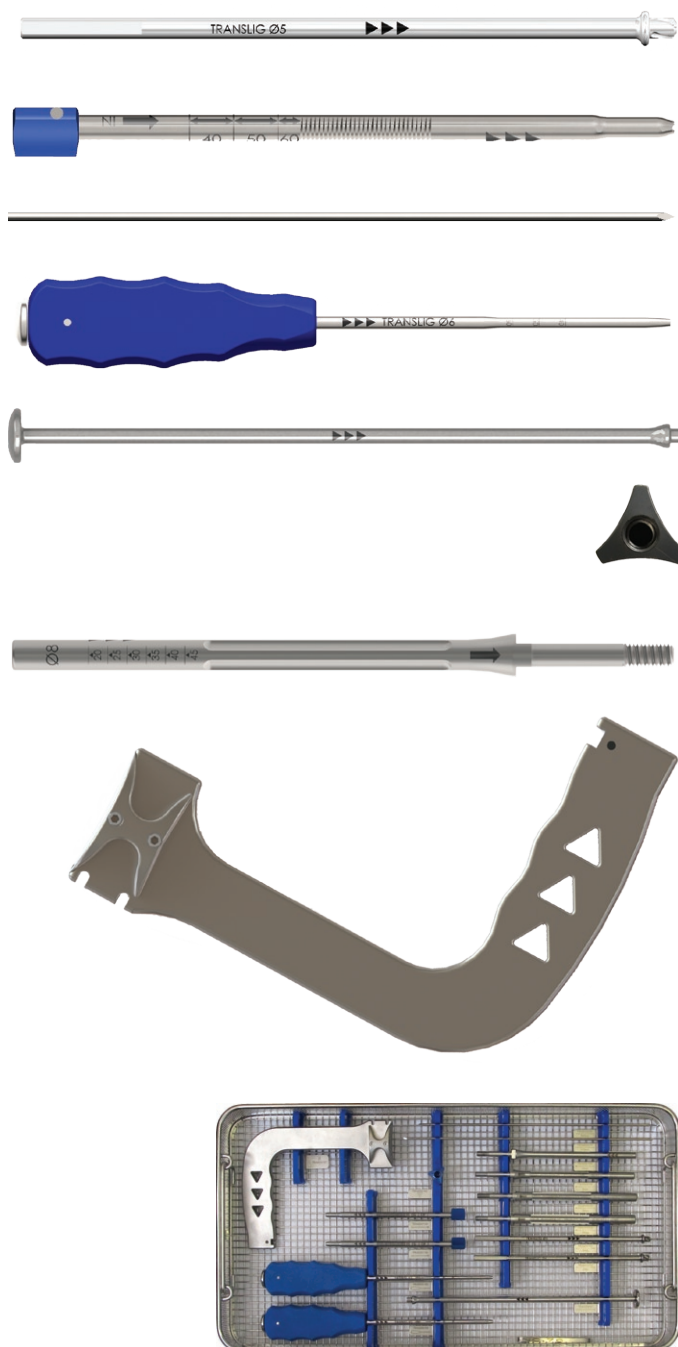
TRANSLIG® are bioabsorbable cross pins designed for femoral fixation in ACL reconstructions. Made of unique Duosorb® material (60% β -TCP & 40% PDLA), TRANSLIG® implants are osteoconductive and prevent inflammatory reactions. Inserting a transverse implant provides a wide bearing surface, graft preservation and an optimal contact between the implant and tunnel walls to enhance bone healing.^{6, 12}



TRANSLIG cross pin:

Ø 5 mm, L 40 mm - COM60TR540
Ø 5 mm, L 50 mm - COM60TR550
Ø 5 mm, L 60 mm - COM60TR560
Ø 6 mm, L 40 mm - COM60TR640
Ø 6 mm, L 50 mm - COM60TR650
Ø 6 mm, L 60 mm - COM60TR660

TRANSLIG® instrumentation for ligament cross pin fixation



Lock drill:

Ø 5 mm - TRA9005160
Ø 6 mm - TRA9000160

Transverse guide pin sleeve for aiming device (x2)
TRA9000159

Transverse guide pin Ø 2.5 mm - L 270 mm (x2)
TRA9025270

Dilator:

Ø 5 mm - TRA9005168
Ø 6 mm - TRA9006168

Cross pin impactor
TRA9000161

Femoral shaft nut
TRA9000162

Femoral shaft:

Ø 7 mm - TRA9007158
Ø 8 mm - TRA9008158
Ø 9 mm - TRA9009158
Ø 10 mm - TRA9010158

Transverse femoral aiming device
TRA9000157

TRANSLIG stainless steel basket with silicone holders
TRA9000001

TRANSLIG complete instrumentation set
TRA9000000

Common instruments for ligament reconstruction



Tibial aiming device

LIG9000034



Guide pin sleeve for aiming device

LIG9000032



Graft gauge

LIG9000035



Stopper

LIG9000051

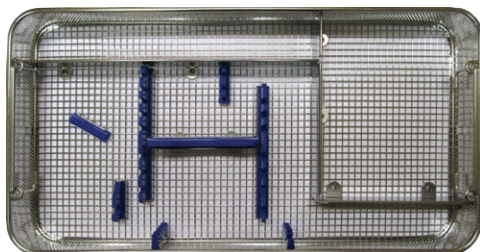


Drill bit:

ø 6 mm - LIG9006048
ø 7 mm - LIG9007048
ø 8 mm - LIG9008048
ø 9 mm - LIG9009048
ø 10 mm - LIG9010048
ø 11 mm - LIG9011048

Guide pin (K-Wire) ø 2.5 mm for drill bits

LIG9125300



LIGAFIX® - PULLUP® stainless steel basket with silicones

PULLIGPA02

Outside-Inside instrument (femoral approach)



Femoral aiming device

LIG9000029

LIGAFIX® complete Outside Inside instrumentation set

LIG90DD000

Blind Tunnel instruments (femoral approach)

Reamer:

ø 8 mm - LIG9008049
ø 9 mm - LIG9009049
ø 10 mm - LIG9010049

Eyelet pin L 400 mm

LIG9000041

Pistol-grip femoral aiming device:

ø 9 mm - LIG9009B45
ø 10 mm - LIG9010B45

LIGAFIX® complete Blind Tunnel instrumentation set

LIG90TB000

Optional instruments

SBM closed stripper

LIG90FSTRI

SBM open stripper

LIG90OSTRI

SN-SBM stripper

LIG9013554

LINV-SBM stripper

LIG90LSTRI

Chondral pick

LIG9000190

Half-size drill bits:

ø 6.5 mm - LIG9065048

ø 7.5 mm - LIG9075048

ø 8.5 mm - LIG9085048

ø 9.5 mm - LIG9095048

ø 10.5 mm - LIG9010548

Routers:

ø 6 mm - LIG9060072

ø 6.5 mm - LIG9065072

ø 7 mm - LIG9070072

ø 7.5 mm - LIG9075072

ø 8 mm - LIG9080072

ø 8.5 mm - LIG9085072

ø 9 mm - LIG9090072

ø 9.5 mm - LIG9095072

ø 10 mm - LIG9010072

ø 10.5 mm - LIG9010572

ø 11 mm - LIG9011072

Graft gauge - half sizes

LIG9000266

Suture retriever pliers

LIG906012T

LIGAFIX® - PULLUP® stainless steel basket lid

PULLIGPA01

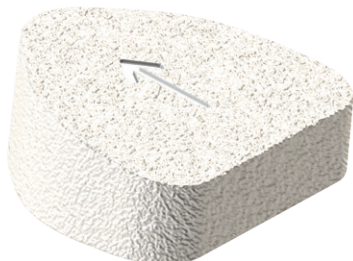


Osteotomies around the knee

OTIS® wedges

OTIS® wedges are bioabsorbable anatomically-shaped implants designed for Opening Wedge High Tibial Osteotomy. Made of synthetic Tricalcium Phosphate (β -TCP), OTIS® wedges are available in different porosities: 30% providing a high mechanical strength and 50% favoring a faster resorption. ^{6, 13, 14, 16, 17}

OTIS®
OTIS 50®



OTIS® - 30% porosity, height:

6 mm - P822365222
7 mm - P822365224
8 mm - P822365226
9 mm - P822365228
10 mm - P822365230
11 mm - P822365232
12 mm - P822365234
13 mm - P822365236
14 mm - P822365238
15 mm - P822365240

OTIS 50® - 50% porosity, height:

6 mm - P822667222
7 mm - P822667224
8 mm - P822667226
9 mm - P822667228
10 mm - P822667230
11 mm - P822667232
12 mm - P822667234
13 mm - P822667236
14 mm - P822667238
15 mm - P822667240

OTIS® instrumentation for High Tibial Osteotomy



OTIS one-piece metallic trial implant - height:

6 mm - EVO90FAH06
7 mm - EVO90FAH07

OTIS metallic trial implant - height:

8 mm - EVO90FAH08
9 mm - EVO90FAH09
10 mm - EVO90FAH10
11 mm - EVO90FAH11
12 mm - EVO90FAH12
13 mm - EVO90FAH13
14 mm - EVO90FAH14
15 mm - EVO90FAH15

Handle for OTIS metallic trial implants (x2)

EVO90FAMAN

Slotted hammer for OTIS metallic trial implants

EVO90FAMAR

OTIS impactor:

tip - EVO9069444
body - EVO9069446

OTIS stainless steel basket with silicone holders

EVO90FA222

OTIS complete instrumentation set for HTO

EVO90FA500



OTIS-C-PLUS® plates and screws

OTIS-C-PLUS® is an anatomically-shaped osteosynthesis designed for Opening Wedge High Tibial Osteotomy. Designed for patients with a high Body Mass Index, the plate and screws are made of stainless steel providing a high mechanical resistance while ensuring easier removal compared to other materials. OTIS-C-PLUS® a low-profile compressive plate: the screws are pre-guided to compress the wedge in order to promote bone fusion.

OTIS-C-PLUS®



OTIS-C-PLUS® plate:
left - EVO9067722
right - EVO9067522

OTIS self-tapping locking screw
ø 6.5 mm, length:

27 mm - EVO9066027
30 mm - EVO9066030
33 mm - EVO9066033
36 mm - EVO9066036
39 mm - EVO9066039
42 mm - EVO9066042
45 mm - EVO9066045
50 mm - EVO9066050
55 mm - EVO9066055
60 mm - EVO9066060
65 mm - EVO9066065
70 mm - EVO9066070



OTIS-C-PLUS® instrumentation for High Tibial Osteotomy

Note: The OTIS-C-PLUS instrumentation includes OTIS instruments



OTIS-C ø 3 mm drill for temporary screw
EVO9035100



OTIS-C ø 3.5 mm round-headed temporary screw (x2)
EVO9069A45



OTIS-C plate twister
EVO9069622



OTIS-C drill guide, diameter:
ø 3.5 mm - EVO9069428
ø 4.5 mm - EVO9069430



OTIS-C drill L195 mm, diameter:
ø 3.5 mm - EVO9069432
ø 4.5 mm - EVO9069434



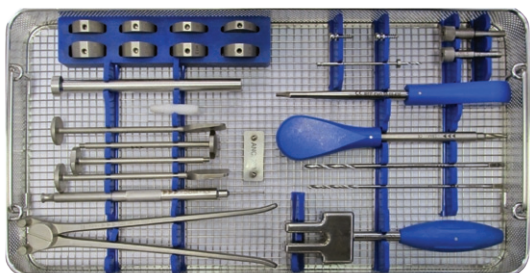
OTIS-C depth gauge
EVO9069438



OTIS-C countersink bit
EVO9040203



OTIS-C ø 3.5 mm hexagonal screwdriver
EVO9069436



OTIS-C-PLUS stainless steel basket with silicone holders
EVO90FA700

OTIS-C-PLUS complete instrumentation set for HTO
EVO90FA800

OTIS-F® plates and screws

OTIS-F® is an anatomically-shaped osteosynthesis designed for Distal Femoral Osteotomies. Versatile, the plate and screws are made of stainless steel providing high mechanical resistance while ensuring easier removal compared to other materials. OTIS-F® has low-profile dimensions and is adapted to the bone density of the femur with three types of screws to ensure proper fixation. The three compressive holes allow compression for subtraction osteotomies and normal fixation for addition osteotomies. ^{13, 14, 16, 17}

OTIS-F®



OTIS-F® plate:

lateral right / medial left - EVO9067822

lateral left / medial right - EVO9067922

OTIS self-tapping locking screw

Ø 6.5 mm, length:

55 mm - EVO9066055

60 mm - EVO9066060

65 mm - EVO9066065

70 mm - EVO9066070

75 mm - EVO9066075

80 mm - EVO9066080



OTIS-F® instrumentation for Distal Femoral Osteotomy



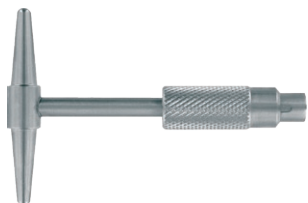
OTIS-F AO drill guide: Ø 3.2 mm & Ø 4.5 mm

EVO90T4000



OTIS-F AO Ø 3.2 mm drill - length 145 mm

EVO900T878



Handle for OTIS-F AO tap

EVO90T3741



OTIS-F AO tap Ø 6.5 mm

EVO90T8086



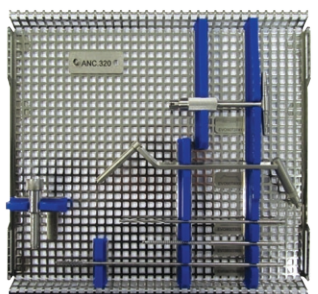
OTIS-F AO tap Ø 4.5 mm

EVO900T868



OTIS-F Ø 4.5 mm drill guide

EVO9069430



OTIS-F in-lay with silicone holders

EVO9080000

Complete OTIS-F in-lay for DFO

EVO9000000

Note: The OTIS-F® plate includes locations for receiving AO type screws, Ø 4.5mm for cortical and Ø 6.5mm for cancellous bone (according to the standards in force). These screws are not supplied by SBM.

Extraction kit for OTIS plates and screws

Removing OTIS plates can be achieved using the regular OTIS screwdriver, the extraction kit can eventually be used to remove broken screws.



Screwdriver for OTIS screws extraction

EVO9069439



Trepine for OTIS screw extraction

EVO9069T65

OTIS aiming device for High Tibial Osteotomies

The OTIS aiming device is designed for Opening Wedge High Tibial Osteotomies. This aiming device is used to precisely position pins that guide the osteotomy incision while maintaining the posterior tibial slope.



OTIS HTO aiming device

EVO9000193



Slide for OTIS HTO aiming device

EVO900A193



Slide lid for OTIS HTO aiming device

EVO900B193



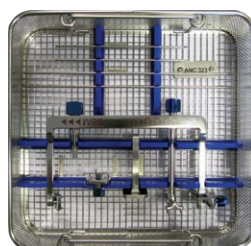
Stabilization pin - L 150 mm (x2)

EVO9020150



Guide pin - L 240 mm (x2)

EVO9020240



Stainless steel basket with silicone holders for HTO aiming device

EVO9000001

HTO aiming device complete instrumentation set

EVO9000002

Cervical spine arthrodesis

BIO-TECMA® bioabsorbable implants (β -TCP) for cervical spine fusion

BIO-TECMA® are anatomically-shaped implants designed for cervical spine fusion. Made of high purity Tricalcium Phosphate (β -TCP), these implants are synthetic, bioactive and bioabsorbable. Their osteoconductive properties promote bone integration while their anatomic design maintains the disc height. ¹⁻³

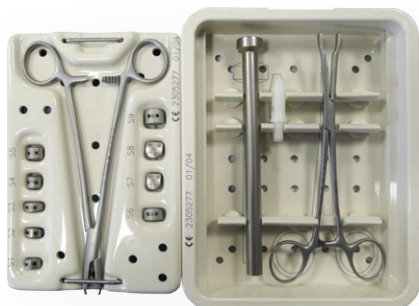
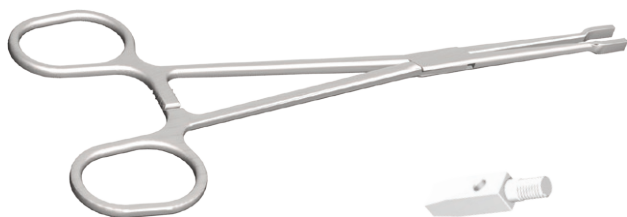
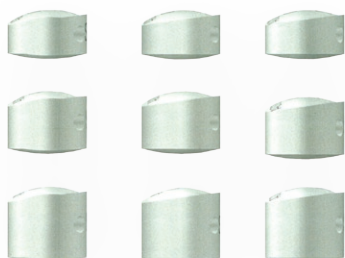
BIO-TECMA®



BIO-TECMA® β -TCP implants:

- Size 1 - (H: 6 mm - W: 10 mm - D: 12 mm) - P822625222
- Size 2 - (H: 6 mm - W: 12 mm - D: 12 mm) - P822625422
- Size 3 - (H: 6 mm - W: 14 mm - D: 12 mm) - P822625622
- Size 4 - (H: 8 mm - W: 10 mm - D: 12 mm) - P822625242
- Size 5 - (H: 8 mm - W: 12 mm - D: 12 mm) - P822625442
- Size 6 - (H: 8 mm - W: 14 mm - D: 12 mm) - P822625642
- Size 7 - (H: 10 mm - W: 10 mm - D: 12 mm) - P822625262
- Size 8 - (H: 10 mm - W: 12 mm - D: 12 mm) - P822625462
- Size 9 - (H: 10 mm - W: 14 mm - D: 12 mm) - P822625662

BIO-TECMA® instrumentation for cervical spine fusion



TECMA metallic trial implant:

- Size 1 - P82912522A
- Size 2 - P82912522B
- Size 3 - P82912522C
- Size 4 - P82912522D
- Size 5 - P82912522E
- Size 6 - P82912522F
- Size 7 - P82912522G
- Size 8 - P82912522H
- Size 9 - P82912522I

TECMA metallic trial implants holder

P829109222

TECMA implant holder

P829109224

TECMA impactor:

tip - P829109446
body - P829109444

TECMA thermoformed container

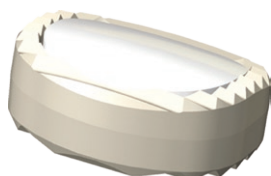
P829125000

TECMA complete instrumentation set

P829125222

DUOCAGE® bioabsorbable cage & insert for cervical spine fusion

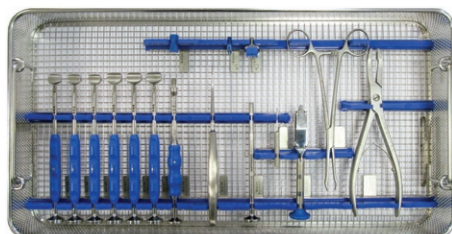
DUOCAGE® are anatomically-shaped implants designed for cervical interbody fusion. The implant is composed of an insert and a cage that are replaced by a normal bone without any inflammatory reaction. The osteoconductive insert favours bone integration, maintains the disc height and improves mechanical strength. The cage promotes proliferation and phenotypic expression of human osteogenic cells and provides the implant stability.^{12, 15}



DUOCAGE® cervical cage + insert:

Size M5 - (H: 5 mm - W: 15 mm - D: 12 mm) - CER6000475
 Size M6 - (H: 6 mm - W: 15 mm - D: 12 mm) - CER6000660
 Size M7 - (H: 7 mm - W: 15 mm - D: 12 mm) - CER6000675
 Size L5 - (H: 5 mm - W: 17 mm - D: 14 mm) - CER6000755
 Size L6 - (H: 6 mm - W: 17 mm - D: 14 mm) - CER6000765
 Size L7 - (H: 7 mm - W: 17 mm - D: 14 mm) - CER6000775

DUOCAGE® instrumentation for cervical spine fusion



DUOCAGE metallic trial implant:

Size M5 - CER90010M5
 Size M6 - CER90010M6
 Size M7 - CER90010M7
 Size L5 - CER90010L5
 Size L6 - CER90010L6
 Size L7 - CER90010L7

DUOCAGE curette for vertebral bodies

CER9000196

DUOCAGE impactor:

tip - CER9003331
 body - CER9003320

DUOCAGE shaft:

tip - CER9002234
 body - CER9002210

DUOCAGE holder:

tip - CER9002232
 body - CER9002200

DUOCAGE spigot rongeur forceps

CER900G002

DUOCAGE spigot remover

CER9004122

DUOCAGE extraction plier

CER900G001

DUOCAGE stainless steel basket with silicone holders

CER9000005

DUOCAGE complete instrumentation set

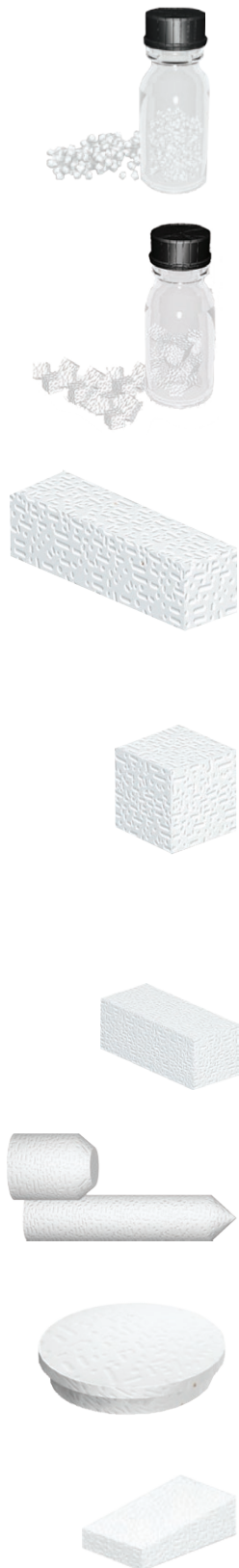
CER9000004

Bone void filling

BIO 1® bioabsorbable implants (β-TCP)

BIO 1® are high purity Tricalcium Phosphate (β-TCP) implants that are ready to use as cancellous or cortico-cancellous bone. Synthetic, bioactive and bioabsorbable, this range is perfectly safe for common bone void filling procedures and promotes bone growth thanks to its osteoconductive properties. ^{3, 4, 5, 6, 8, 9, 11}

BIO 1®



Granules:

- Ø 1 mm (0.6 cc) - P822692240
- Ø 1 mm (2 cc) - P822692243
- Ø 1 mm (5 cc) - P822692244
- Ø 1 mm (15 cc) - P822692246
- Ø 1.5 mm (5 cc) - P822692444
- Ø 1.5 mm (15 cc) - P822692446
- Ø 3 mm (5 cc) - P822692644
- Ø 3 mm (15 cc) - P822692646

Macro-porous cubes:

- 4 x 4 x 4 mm (15 cc) - P822893229
- 4 x 4 x 4 mm (30 cc) - P822893233
- 4 x 4 x 4 mm (45 cc) - P822893232

Sticks:

- 3 x 3 x 10 mm (x 10) - P822634240
- 5 x 5 x 10 mm (x 5) - P822634440
- 5 x 5 x 10 mm (x 10) - P822634442
- 5 x 5 x 10 mm (x 20) - P822634441
- 5 x 5 x 20 mm (x 1) - P822634446
- 5 x 5 x 20 mm (x 6) - P822634450
- 5 x 5 x 20 mm (x 10) - P822634444
- 5 x 5 x 20 mm (x 20) - P822634445

Cubes:

- 5 x 5 x 5 mm (x 1) - P822693210
- 5 x 5 x 5 mm (x 2) - P822693220
- 5 x 5 x 5 mm (x 5) - P822693221
- 5 x 5 x 5 mm (x 10) - P822693222
- 7 x 7 x 7 mm (x 1) - P822693420
- 7 x 7 x 7 mm (x 2) - P822693421
- 7 x 7 x 7 mm (x 5) - P822693422
- 10 x 10 x 10 mm (x 1) - P822693620
- 10 x 10 x 10 mm (x 2) - P822693622
- 10 x 10 x 10 mm (x 10) - P822693624

Blocks:

- 10 x 10 x 25 mm (x 1) - P822694444
- 30 x 20 x 10 mm (x 1) - P822374400

Cylinders:

- Ø 6 mm / L 25 mm (x 2) - P822441442
- Ø 6 mm / L 25 mm (x 4) - P822441444
- Ø 8 mm / L 10 mm (x 3) - P822661222

Trephine hole filling:

- Ø 10 mm (x 2) - P822311244
- Ø 10 mm (x 3) - P822311245
- Ø 12 mm (x 2) - P822311444
- Ø 12 mm (x 3) - P822311445
- Ø 14 mm (x 2) - P822311644
- Ø 14 mm (x 3) - P822311645

Anatomically-shaped implants:

- Ankle arthrodesis 30 x 25 x 7 x 3 mm (x 1) - P822375602
- Metatarsian osteotomy 15 x 10 x 4 x 2 mm (x 1) - P822375000
- Patellar filling 10 x 10 x 6 mm (x 1) - P822694220

BIO 1-S® pre-loaded syringes with β-TCP

Bio 1-S® is a pre-loaded syringe containing bioabsorbable β-TCP (Tricalcium Phosphate), designed for filling small volume cavities that are not subjected to mechanical stresses. The use of the syringe provides enhanced precision and comfort when inserting the granules.^{3, 4, 5, 6, 8, 9, 11}



BIO 1-S® pre-loaded syringe with β-TCP granules:

- ∅ 0.6 mm (0.5 cc) x 1 - B1S2692220
- ∅ 1 mm (0.5 cc) x 1 - B1S2692240
- ∅ 1 mm (1 cc) x 1 - B1S2692244
- ∅ 1 mm (1 cc) x 2 - B1S2692246
- ∅ 1.5 mm (2 cc) x 1 - B1S2692440
- ∅ 1.5 mm (2 cc) x 2 - B1S2692442

BIO 1-S® syringe cutter

B1S9000001

BIO 1-KIT® pre-loaded syringes for bone marrow / β-TCP mix preparation

The Bio 1-KIT® system to prepare quick and easy bone marrow / β-TCP (Tricalcium Phosphate) mixes for bone void filling. Harvesting and mixing are done in completely aseptic conditions, preserving the osteoinductive coagulum until implantation.^{3, 4, 5, 6, 8, 9, 11}



Bio 1-KIT® syringe with macroporous cubes + accessories
Macro-porous cubes sizes:

- 4 x 4 x 4 mm (5 cc) - SER2893222
- 4 x 4 x 4 mm (10 cc) - SER2893224
- 4 x 4 x 4 mm (15 cc) - SER2893226
- 4 x 4 x 4 mm (30 cc) - SER2893228

Bio 1-KIT® syringe with granules + accessories
Granules sizes:

- ∅ 1.5 mm (5 cc) - SER2692442
- ∅ 1.5 mm (10 cc) - SER2692444
- ∅ 1.5 mm (15 cc) - SER2692446
- ∅ 1.5 mm (30 cc) - SER2692448
- ∅ 3 mm (5 cc) - SER2692642
- ∅ 3 mm (10 cc) - SER2692644
- ∅ 3 mm (15 cc) - SER2692646
- ∅ 3 mm (30 cc) - SER2692648

Included accessories:

Jamshidi type trocar & connector

BIO 1-QUICKSET® injectable self-hardening bone void filler

BIO 1-QUICKSET® is a synthetic bone substitute designed to fill osseous defects that are not subject to mechanical stresses (< 6 MPa). The syringe is pre-filled with an osteoconductive resorbable powder based on β-TCP (Tricalcium Phosphate). Once the saline solution added, the delivery system enables to inject in situ self hardening substitute for hardly accessible defects and for minimally-invasive procedures. The system enables to fill in an optimal way irregular bone defects and to improve implant-bone contact.^{7, 10}



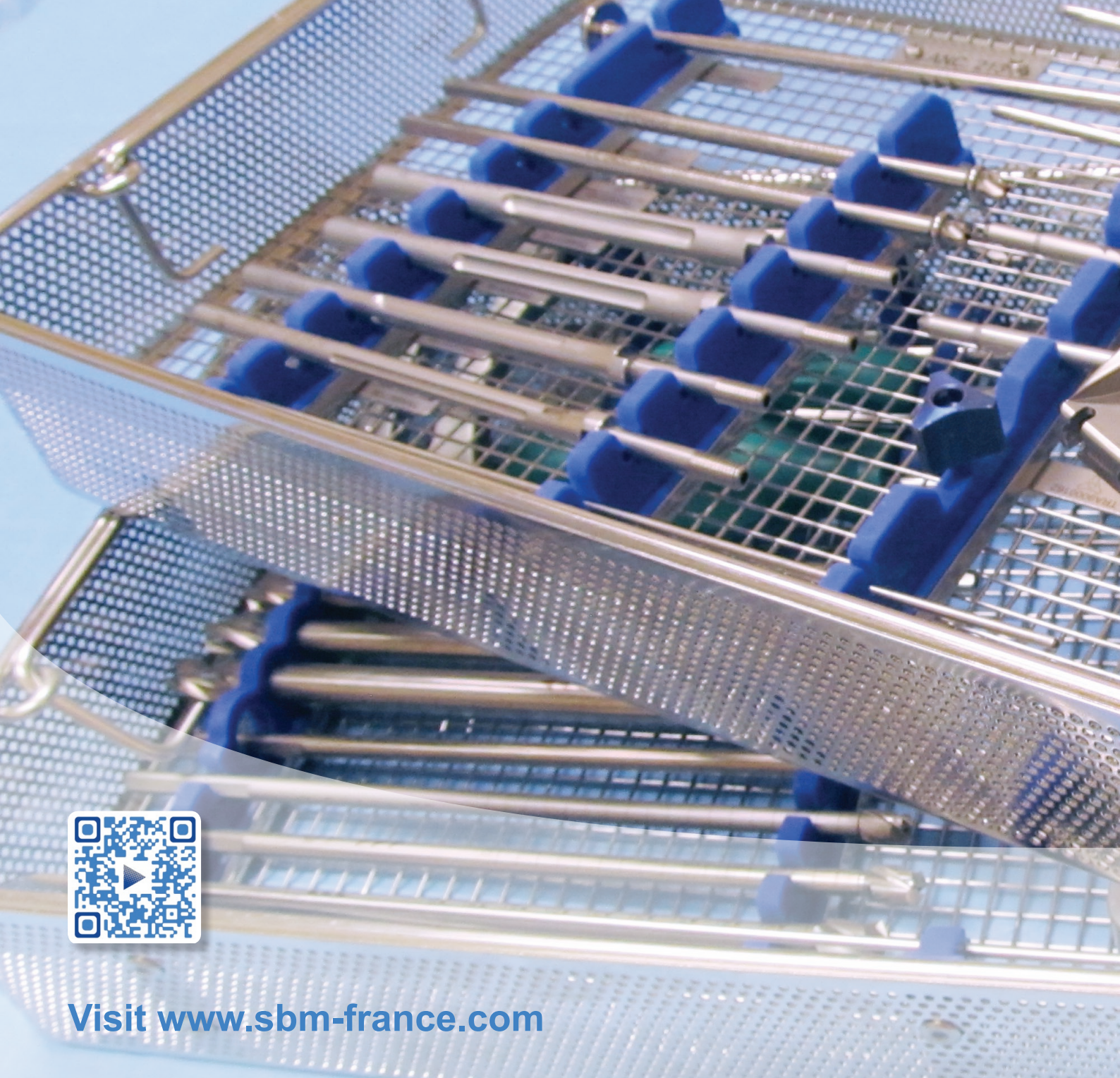
BIO 1-QUICKSET® injectable self-hardening bone void filler:

- 5 cc - SER2692442
- 10 cc - SER2692444
- 15 cc - SER2692446

Included accessories:

Cannula, Luer connector & vial of saline solution

- 1 Influence of porosity on the mechanical resistance of Hydroxyapatite ceramics under compressive stress.
LE HUEC J.-C., SCHAEVERBEKE T., CLEMENT D., FABER J., LE REBELLER A.
Biomaterials, 16, 113-118, 1995.
- 2 Comparison of Endobone and Tri-Calcium Phosphate bone substitutes in interbody fusion.
ROBERT R.
Int. Forum on New Technologies in Advanced Spine Surgery, Bad-Füssing (Allemagne), 1997.
- 3 Tri-calcium Phosphate ceramics and allografts as bone substitutes for spinal fusion in Idiopathic scoliosis : comparative clinical results at four years.
LE HUEC J.-C., LESPRIT E., DELAVIGNE C., CLEMENT D., CHAUVEAUX D., LE REBELLER A.
Acta Orthopaedica Belgica, 63 / 3, 202-211, 1997.
- 4 Cellular biocompatibility and resistance to compression of macroporous β -Tricalcium Phosphate ceramics.
SOUS M., BAREILLE R., ROUAIS A., CLEMENT D., AMEDEE J., DUPUY B., BAQUEY C.
Biomaterials, 19, 2147-2153, 1998.
- 5 Evolution of the local Calcium content around irradiated Tricalcium Phosphate ceramic implants : In-Vivo study in the rabbit.
LE HUEC J.-C., CLEMENT D., BROUILLAUD B., BARTHE N., DUPUY B., FOLIGUET B., BASSE-CATHALINAT B.
Biomaterials, 19, 733-738, 1998.
- 6 The use of calcium phosphates, their biological properties.
LE HUEC J.-C., CLEMENT D., LESPRIT E., FABER J.
European Journal of Orthopaedic surgery and traumatology, 10, 223-229, 2000.
- 7 In vivo testing of a new in situ setting β -tricalcium phosphate cement for osseous reconstruction.
NIEDHART C., MAUS U., REDMANN E., SIEBERT C.
John Wiley & Sons, Inc. J Biomed Mater Res 55: 530-537, 2001.
- 8 Use of β -Tricalcium Phosphate in foot and ankle surgery: a report of 20 cases.
GALOIS L., MAINARD D., PFEFFER F., TRAVERSARI R., DELAGOUTTE J.-P.
Foot and Ankle Surgery, 7, 217-227, 2001.
- 9 β -Tricalcium Phosphate ceramic as a bone substitute in orthopaedic surgery.
GALOIS L., MAINARD D., DELAGOUTTE J.-P.
International Orthopaedics (SICOT), 26, 109-115, 2002.
- 10 Evaluation of a resorbable, in situ setting bone substitute in a sheep model.
NIEDHART C., MAUS U., PIROTH W., MILTNER O., SCHMIDT-ROHLFING B., SIEBERT C.
Wiley Periodicals, Inc. J Biomed Mater Res Part B: Appl Biomater 71B: 123-129, 2004.
- 11 Bone ingrowth into two porous ceramics with different pore sizes: An experimental study.
GALOIS L., MAINARD D.
Acta Orthopaedica Belgica, 70, 598-603, 2004.
- 12 Biological performance of a new β -TCP/PLLA composite material for applications in spine surgery : In vitro and in vivo studies.
AUNOBLE S., CLEMENT D., FRAYSSINET P., HARMAND M.-F., LE HUEC J.-C.
Journal of Biomedical Materials Research, Part A, Art. 30749, 1-7, 2006.
- 13 Computer-assisted high tibial and double-level osteotomies for genu varum deformity.
SARAGAGLIA D., ROBERTS J., RUBENS-DUVAL B.
Techniques in Knee Surgery, 5(4) :212-217, 2006.
- 14 Resorbability of rigid beta-tricalcium phosphate wedges in open-wedge high tibial osteotomy. A retrospective radiological study.
KRAAL T., MULLENDER M., DE BRUINE J.H.D., REINHARD R., DE GAST A., KUIK D.J., VAN ROYEN B.J.
The Knee, 15, 201-205, 2008.
- 15 Anterior cervical fusion with a bio-resorbable composite cage (β TCP-PLLA) : clinical and radiological results from a prospective study on 20 patients.
DEBUSSCHER F., AUNOBLE S., ALSAWAD Y., CLEMENT D., LE HUEC J.-C.
Eur Spine J, DOI 10.1007/s00586-009-1062-1, 2009.
- 16 Outcome of opening wedge high tibial osteotomy augmented with a Biosorb wedge and fixed with a plate and screws in 124 patients with a mean of ten years follow-up.
SARAGAGLIA D., BLAYSAT M., INMAN D., MERCIER N.
International orthopaedics 2010.
- 17 Results of forty two computer-assisted double level osteotomies for severe genu varum deformity.
SARAGAGLIA D., BLAYSAT M., MERCIER N., GRIMALDI M.
International orthopaedics 2012, 36:999-1003.
- 18 Comparison of resorption and remodeling of bioabsorbable interference screws in anterior cruciate ligament reconstruction.
NTAGIOPOULOS Panagiotis G., DEMEY G., TAVERNIER T., DEJOUR D.
International Orthopaedics 2014, DOI 10.1007/s00264-014-2530-8



Visit www.sbm-france.com

SBM (Science for BioMaterials) has been specialized in the design, manufacturing and distribution of biomaterials for bone surgery since 1991. The company's priority is the development and optimization of medical devices in favor of bone healing and human tissue replacement.

By completely controlling its technique in biomaterials, the company elaborates a range of innovative, 100% synthetic and absorbable systems along with specific ancillary instrumentation. Firmly established on the French domestic market, SBM has expanded its activities abroad in more than 40 countries for the sales and development of new products, in order to better meet the demands of the medical industry worldwide.



SBM SAS

ZI du Monge
65100 LOURDES
FRANCE
Phone: (+33) 5 62 42 32 12
Fax: (+33) 5 62 42 32 52
www.sbm-france.com

SBM, INC.

(Subsidiary)
19 Hancock Street #2
WINCHESTER, MA 01890
USA
Phone: (+1) 781 369 1782
www.sbm-france.us



Read carefully the instructions for use that comes with the medical devices or labeling provided to medical professionals.
Document not legally binding - Can be modified without prior notice.
Manufactured by SBM © 2015. Ref: MGSBMCAEN - v4.0115